

Dual Infrared Measuring Device with Probe Connection

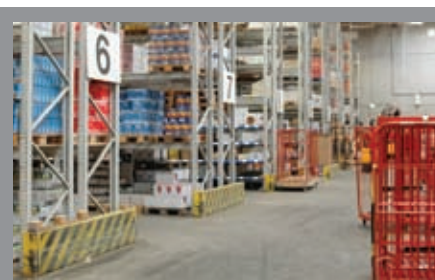
TFI 550



Technical Data

Type	TFI 550
Measuring range	-60°C ... +550°C (-76°F ... 1,022°F)
Accuracy	±2°C at -18°C ... +23°C (±3.6°F at 0°F ... 73°F) ±1% of measured value / ±1°C (whichever is larger) at +23°C ... +510°C / ±1.8°F (whichever is larger) at 73°F ... 950°F
Resolution	0.1°C at -9.9°C ... +199°C, otherwise 1°C (0.2°F at 14°F ... 391°F, otherwise 1.8°F)
Reaction time (90%)	approx. 1 s
Emissivity factor	0.1 ... 1.0
Ratio distance-measurement spot	30:1
NiCrNi probe measurement	
Measuring range	-64°C ... +1400°C (-83°F ... 2,552°F)
Accuracy	±1% of measured value / ±1°C (±1.8°F), whichever is larger
Battery lifetime	typically 180 h
Operating temperature	0°C ... +50°C (32°F ... 122°F)
Storage temperature	-20° C ... +65°C (-4°F ... 149°F)
Housing	ABS
Protection class	IP 20
Weight incl. battery	approx. 180 g
Certificate	6 point factory calibration

TFI 550



Applications

- Fast refrigerated goods checks
- Climate control systems
- Incoming goods inspection
- Process monitoring
- Storage
- Food products industry

Attributes

- Infrared for non-contact surface temperature measurement
- Optics D:S = 30:1
- Double laser pointer
- NiCrNi connection for core temperature measurement with penetration probe
- Alarm when Min/Max exceeded
- Factory calibration certificate

Description	Type	Part No.
Infrared thermometer with NiCrNi connection	TFI 550	1340-1786
Penetration probe with cable, SMP	TPN 211	1343-1005
Surface / paddle probe with 1 m cable, SMP	TPN 341	1343-1015

Remarks

For all NiCrNi-probes with SMP port.