

Software

ebro offers exactly the software you need:

- Evaluation software for any applications:
Winlog.basic, Winlog.light and Winlog.pro
- Evaluation software for EBI 25 data loggers:
Winlog.web and Winlog.wave
- Evaluation software for pharmaceutical and medical applications:
Winlog.med and Winlog.validation

Software/Features	Winlog.basic	Winlog.light	Winlog.pro	Winlog.med	Winlog.validation	Winlog.wave	Winlog.web
Event Triggered Recording			●	●	●		●
Script-Calculations			●				●
System-Scripts			●				
Picture Manager			●		●		
Measure in Charts			●				
Cursor		●	●	●	●		
Realtime Calculations			●	●	●		●
Ranges			●	●	●		
Range-based Calculations			●	●	●		
Statistics per Range			●	●	●		
Relative Time Axis			●				
Configurations		●	●	●(2)	●(2)		
Firmware-Update		●	●	●	●		●
Import		●(1)	●(1)				
Calibration			●	●	●		
Automatic File Name Generation			●				
21 CFR Part 11	●	●	●	●	●	●	●
User Administration	●	●	●	●	●	●	●
Audit-Trail	●	●	●	●	●	●	●
Advanced Chart Features		●	●				
Multi Document Support		●	●	●	●		
Export (Excel, PDF)	●	●	●	●	●	●	●
Customizable Company Logo	●	●	●	●	●	●	●
Wireless Support			●	●	●	●	●
2D Placement		●	●		●	●	●
3D Placement					●		
Routine Check			●(3)	●	●		
Validation			●(3)		●		
Unit Administration	●	●	●	●	●		●
Split Measurements			●	●	●		
Advanced Alarm-Management (Zones)	●(5)	●(5)	●(5)				
App Winlog.mobile							●

(1) Winlog.basic, Winlog.validation

(2) Template based

(3) Manual

(4) Since V2.5

(5) EBI 310 only

(6) Since V2.6

(7) Since V3.3

(8) Since V2.63

(9) Since V3.5



Supported Logger Types	Winlog.basic	Winlog.light	Winlog.pro	Winlog.med	Winlog.validation	Winlog.wave	Winlog.web
EBI 10		●	●	●	●		
EBI 11		●	●	●	●		
EBI 16				●(9)	●(9)		
EBI 20	●	●	●	●(7)	●(7)		
EBI 25						●	●
EBI 40		●	●	●(7)	●(7)		
EBI 100		●	●	●	●		
EBI 300	●(4)	●(4)	●(4)	●(7)	●(7)		
EBI 310	●(6)	●(6)	●(6)	●(7)	●(7)		
EBI 330	●(8)	●(8)	●(8)				

System Requirements	Winlog.basic	Winlog.light	Winlog.pro	Winlog.med	Winlog.validation	Winlog.wave	Winlog.web
Windows Vista / 32 bit	●	●	●	●	●	●	●
Windows Vista / 64 bit	●	●	●	●	●	●	●
Windows 7 / 32 bit	●	●	●	●	●	●	●
Windows 7 / 64 bit	●	●	●	●	●	●	●
Windows 8 / 32 bit	●	●	●	●	●	●	●
Windows 8 / 64 bit	●	●	●	●	●	●	●
Windows 10 / 32 bit	●	●	●	●	●	●	●
Windows 10 / 64 bit	●	●	●	●	●	●	●
Memory	≥ 1GB	≥ 1GB	≥ 1GB	≥ 1GB	≥ 1GB	≥ 1GB	≥ 2 GB
Hard Disc Memory	≥ 300 MB	≥ 300 MB	≥ 300 MB	≥ 1 GB	≥ 1 GB	≥ 1 GB	≥ 5 GB
CD/DVD Drive	●	●	●	●	●	●	●
Screen Resolution	≥ 1024x768	≥ 1024x768	≥ 1024x768	≥ 1024x768	≥ 1024x768	≥ 1024x768	≥ 1024x768
Processor	Pentium 1GHz+	Pentium 1GHz+	Pentium 1GHz+	Pentium 1GHz+	Pentium 1GHz+	Dual Core 2 GHz+	Dual Core 2 GHz+

Market Overview	Winlog.basic	Winlog.light	Winlog.pro	Winlog.med	Winlog.validation	Winlog.wave	Winlog.web
Food	●	●	●			●	●
Industry	●	●	●		●	●	●
Pharmaceutical		●	●		●		●
Medical		●	●	●	●		

Available Languages	Winlog.basic	Winlog.light	Winlog.pro	Winlog.med	Winlog.validation	Winlog.wave	Winlog.web
English	●	●	●	●	●	●	●
French	●	●	●	●	●	●	●
Italian	●	●	●	●	●	●	●
Spanish	●	●	●	●	●	●	●
Chinese	●	●	●	●	●	●	●
Japanese	●	●	●	●	●		
Korean			●	●	●		
Portuguese				●	●		
Greek				●	●		
Czech	●	●	●	●	●		
Swedish	●	●	●	●	●		
Dutch			●	●	●		
German	●	●	●	●	●	●	●
Turkish				●	●		
Polish				●	●		

Evaluation Software for Any Applications

Winlog.basic, Winlog.light, Winlog.pro

For programming and readout of ebro data loggers and for evaluating the measurement values ebro offers three different software versions: the **free Winlog.basic**, the **standard software Winlog.light** and the **professional software Winlog.pro**.

Benefits

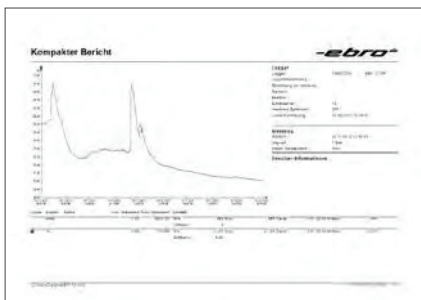
- Easy installation
- Easy programming of the data loggers, no prior knowledge required
- Extensive and custom report generation
- Suitable for all applications
- Security by compliance with FDA 21 CFR Part 11

Extensive Report Generation

The software makes it easy to generate standard and custom reports:

- Compact, one-sided report (1)
- Multi-page, detailed report (2)
- Tabular report with the measurement values (3)
- Insertion of your own company logo possible (4)
- Export data to Microsoft Excel® and PDF (5)
- Integration of pictures and graphics possible (Winlog.pro only) (6)

(1)



(3)

Time	Value	Status
10:00:00	10.00	OK
10:01:00	10.01	OK
10:02:00	10.02	OK
10:03:00	10.03	OK
10:04:00	10.04	OK
10:05:00	10.05	OK
10:06:00	10.06	OK
10:07:00	10.07	OK
10:08:00	10.08	OK
10:09:00	10.09	OK
10:10:00	10.10	OK
10:11:00	10.11	OK
10:12:00	10.12	OK
10:13:00	10.13	OK
10:14:00	10.14	OK
10:15:00	10.15	OK
10:16:00	10.16	OK
10:17:00	10.17	OK
10:18:00	10.18	OK
10:19:00	10.19	OK
10:20:00	10.20	OK
10:21:00	10.21	OK
10:22:00	10.22	OK
10:23:00	10.23	OK
10:24:00	10.24	OK
10:25:00	10.25	OK
10:26:00	10.26	OK
10:27:00	10.27	OK
10:28:00	10.28	OK
10:29:00	10.29	OK
10:30:00	10.30	OK
10:31:00	10.31	OK
10:32:00	10.32	OK
10:33:00	10.33	OK
10:34:00	10.34	OK
10:35:00	10.35	OK
10:36:00	10.36	OK
10:37:00	10.37	OK
10:38:00	10.38	OK
10:39:00	10.39	OK
10:40:00	10.40	OK
10:41:00	10.41	OK
10:42:00	10.42	OK
10:43:00	10.43	OK
10:44:00	10.44	OK
10:45:00	10.45	OK
10:46:00	10.46	OK
10:47:00	10.47	OK
10:48:00	10.48	OK
10:49:00	10.49	OK
10:50:00	10.50	OK
10:51:00	10.51	OK
10:52:00	10.52	OK
10:53:00	10.53	OK
10:54:00	10.54	OK
10:55:00	10.55	OK
10:56:00	10.56	OK
10:57:00	10.57	OK
10:58:00	10.58	OK
10:59:00	10.59	OK
11:00:00	10.60	OK

(5)

Time	Value	Status
10:00:00	10.00	OK
10:01:00	10.01	OK
10:02:00	10.02	OK
10:03:00	10.03	OK
10:04:00	10.04	OK
10:05:00	10.05	OK
10:06:00	10.06	OK
10:07:00	10.07	OK
10:08:00	10.08	OK
10:09:00	10.09	OK
10:10:00	10.10	OK
10:11:00	10.11	OK
10:12:00	10.12	OK
10:13:00	10.13	OK
10:14:00	10.14	OK
10:15:00	10.15	OK
10:16:00	10.16	OK
10:17:00	10.17	OK
10:18:00	10.18	OK
10:19:00	10.19	OK
10:20:00	10.20	OK
10:21:00	10.21	OK
10:22:00	10.22	OK
10:23:00	10.23	OK
10:24:00	10.24	OK
10:25:00	10.25	OK
10:26:00	10.26	OK
10:27:00	10.27	OK
10:28:00	10.28	OK
10:29:00	10.29	OK
10:30:00	10.30	OK
10:31:00	10.31	OK
10:32:00	10.32	OK
10:33:00	10.33	OK
10:34:00	10.34	OK
10:35:00	10.35	OK
10:36:00	10.36	OK
10:37:00	10.37	OK
10:38:00	10.38	OK
10:39:00	10.39	OK
10:40:00	10.40	OK
10:41:00	10.41	OK
10:42:00	10.42	OK
10:43:00	10.43	OK
10:44:00	10.44	OK
10:45:00	10.45	OK
10:46:00	10.46	OK
10:47:00	10.47	OK
10:48:00	10.48	OK
10:49:00	10.49	OK
10:50:00	10.50	OK
10:51:00	10.51	OK
10:52:00	10.52	OK
10:53:00	10.53	OK
10:54:00	10.54	OK
10:55:00	10.55	OK
10:56:00	10.56	OK
10:57:00	10.57	OK
10:58:00	10.58	OK
10:59:00	10.59	OK
11:00:00	10.60	OK

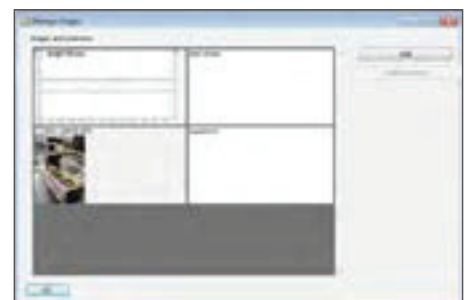
(2)

Field	Value
Logger	10.00
Location	10.01
Date	10.02
Time	10.03
Status	OK
Value	10.04
Unit	10.05
Range	10.06
Resolution	10.07
Accuracy	10.08
Precision	10.09
Repeatability	10.10
Stability	10.11
Linearity	10.12
Hysteresis	10.13
Drift	10.14
Offset	10.15
Gain	10.16
Intercept	10.17
Slope	10.18
Correlation	10.19
Residual	10.20
Mean	10.21
Std Dev	10.22
Min	10.23
Max	10.24
Range	10.25
Q1	10.26
Q3	10.27
IQR	10.28
Outliers	10.29
Summary	10.30

(4)



(6)





Winlog.basic

Easy to use, free software

- User friendly: intuitive and easy to use
- Graphical and numerical display of measurement data
- Protocol print (with printer and computers)
- Scan and enlarge of the measurement data
- Data export to Microsoft® Excel and PDF
- FDA 21 CFR Part 11 functionality as an option



Winlog.light

Standard software

- Contains all the features of Winlog.basic
- Data import from other ebro application programs
- Many standard reports
- Displays statistics on measurement data (e.g. MIN/MAX, mean, standard deviation etc.)
- Creation of configurations possible



Winlog.pro

Professional software

- Contains all the features of Winlog.basic and Winlog.light
- Enables real-time monitoring with wireless data loggers
- Formula editor for calculating the F0-value of the absolute humidity, the PE value etc.
- Display of the timeline either absolute or relative
- Customized definition of individual areas possible (with their own statistics and calculations)
- Including calibration tool for data loggers
- Integration of pictures and graphics into reports possible
- IQ/OQ documentation optional

System Requirements

So that the software can run on your computer with any problem, your computer must meet the following requirements:

Hardware Requirements:

- At least 1 GHz processor speed
- At least 1 GB working memory
- At least 1 GB free hard disc space
- USB (Universal Serial Bus)

Software requirements:

- Operating system Microsoft®
- Windows Vista (32 Bit and 64 Bit)
 - Windows 7 (32 Bit and 64 Bit)
 - Windows 8 (32 Bit and 64 Bit)
 - Windows 10 (32 Bit and 64 Bit)



Type	Description	Part No.
Winlog.basic	Free evaluation software	1340-2375
Winlog.light	Standard evaluation software	1340-2354
Winlog.pro	Professional evaluation software	1340-2355
IQ/OQ Winlog. Installation and Operation Qualifications for Winlog. pro		1340-2286

Evaluation Software for EBI 25 Data Loggers

Winlog.wave and Winlog.web

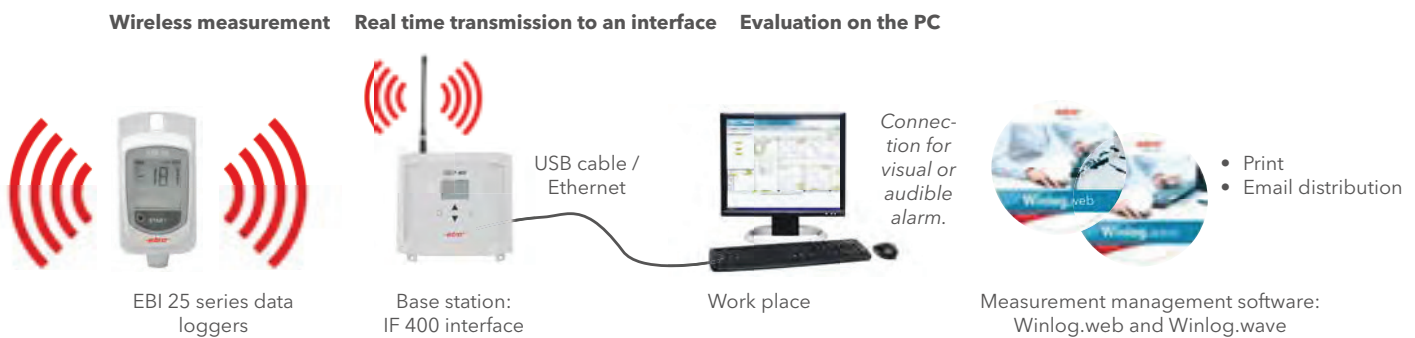
For programming and readout of EBI 25 data loggers as well as for evaluating the measurement values. The software automatically collects and evaluates data and alerts if necessary.

Functionality

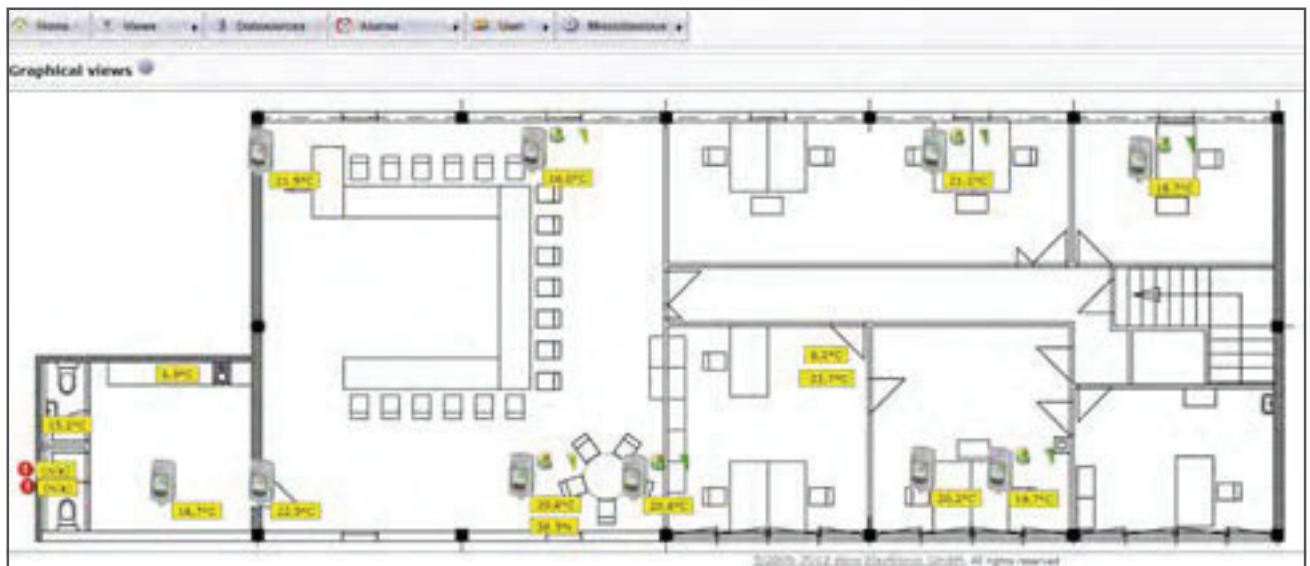
The innovative EBI 25 system monitors wirelessly, transmits the data in real time to an interface (base station) and from there to the desired server or PC.

As soon as a temperature, humidity or any other measurement has exceeded a user defined limit, an alarm is immediately sent via email.

Please find the EBI 25 Data Logger Family starting on page 62.



Quick graphical overview of all measurement points including an image or floor plan view:





Winlog.wave

Basic version for local PC usage

- Single PC solution: The basic version for easy measurement data evaluation on a single PC- no network required.
- Flexible alarm management: graphic and email alarm notifications upon user defined conditions
- Connection to the IF 400 via USB
- FDA 21 CFR Part 11 data security functionality



Winlog.web

Professional version internet and local network based use

- Web based client/server solution: the measurement data can be evaluated on all PCs and smartphones via the internet or connected to the local network
- Very flexible and wide alarm management: alarm notifications upon user defined conditions, alarm notification via email; visual and audible alarm via the graphical user interface
- Connection of the interface IF 400 via USB and Ethernet
- FDA 21 CFR Part 11 data security functionality
- Management of larger data sets
- IQ / OQ documentation available

For users of the software
Winlog.web ebro has designed
an App called



- free of charge - to monitor the
performance via smartphone.

System Requirements

To enable the software to operate smoothly,
your computer must meet the following
requirements:

Hardware requirements:

- Processor speed minimum 2 GHz
- Working memory 2 GB
- 5 GB free hard disc space
- USB (Universal Serial Bus)

Software requirements:

- Operating System Microsoft®
- Windows Vista (32 Bit and 64 Bit)
 - Windows 7 (32 Bit and 64 Bit)
 - Windows 8 (32 Bit and 64 Bit)
 - Windows 10 (32 Bit and 64 Bit)

Further requirements:

- Mozilla Firefox 3.0
- Microsoft Internet Explorer 7



Type	Description	Part No.
Winlog.wave	Evaluation software (single-user version)	1340-2391
Winlog.web	Evaluation software (web-based server version)	1340-2390
IQ/OQ Winlog. web	Installation Qualification and Operation Qualification for Winlog.web	1340-2290

Evaluation Software for Pharmaceutical and Medical Applications

Winlog.med and Winlog.validation

The Winlog.med and Winlog.validation software versions is suitable for programming and readout of ebro data loggers as well as for evaluating the measurement values. The software guides you step by step through the validation or routine control process and evaluates the measurement automatically.

Flexible Report Generation

Whether you need a short process report or a table report with all measurement data – ebro's Winlog software makes it easy.

Table report

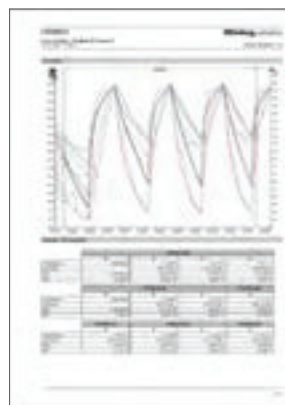
Detailed result overview

Process parameters, e.g. theoretical steam temperature calculation

Lethality report

Equipment used

Graphical data



Statistical data



Winlog.med

For routine controls

- User-friendly
- High precision measurements
- Automatic report generation
- Automatic user-defined calculations
- Automatic identification of process cycles
- Creation of user-defined masters for specific devices and thermal processes
- Three-dimensional demonstration of sensor placement
- FDA 21 CFR Part 11



Winlog.validation

For routine control and validation

Powerful report and evaluation software fitting the requirements of validation and qualification in Pharmaceuticals and Medicine.

- TÜV Industrial Services certified
- User-friendly
- High precision measurements
- Automatic report generation
- Automatic user-defined calculations
- Automatic identification of process cycles
- Creation of user-defined masters for specific devices and thermal processes
- Three-dimensional demonstration of sensor placement
- FDA 21 CFR Part 11
- IQ / OQ available
- Automatic completion of validation processes



System Requirements

To enable the software to operate smoothly, your computer must meet the following requirements:

Hardware requirements:

- Processor speed minimum 1 GHz
- Working memory 1 GB
- 1 GB free hard disc space
- USB (Universal Serial Bus)

Software requirements:

- Operating System Microsoft®
- Windows Vista (32 Bit und 64 Bit)
 - Windows 7 (32 Bit und 64 Bit)
 - Windows 8 (32 Bit und 64 Bit)
 - Windows 10 (32 Bit und 64 Bit)



Type	Description	Part No.
Winlog.med	Standard evaluation software for routine controls	1340-2363
Winlog.validation	Professional evaluation software for routine controls and validations	1340-2394
IQ/OQ Winlog.validation	Installation Qualification and Operation Qualification for Winlog.validation	1340-2287